

SHORE PARK

12' SERIES FLOOR PLANS

BRINGING AMERICA HOME * BRINGING AMERICA FUN

HOME

SHORE PARK IS WHERE YOU PARK IT BY SKYLINE

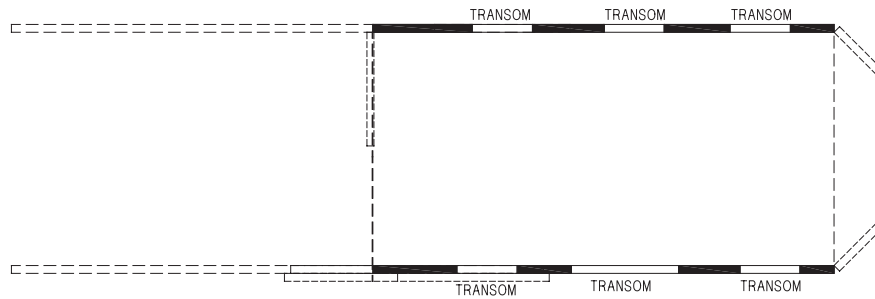
SINCE 1951

LEOLA, PENNSYLVANIA

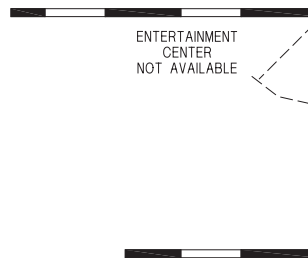
12' SERIES

Skyline is pleased to introduce the Shore Park series of park models. Ideal for campgrounds, retirement communities, or that perfect little spot by the lake, Shore Park features can include the a spacious residential bath, custom painted drywall interior, real wood trim and innovative ceiling finishes. Manufactured in Leola, Pennsylvania and backed by over 65 years of manufacturing experience, a 15-month warranty and stellar customer service, the only thing you have to worry about is where you're going to park them.





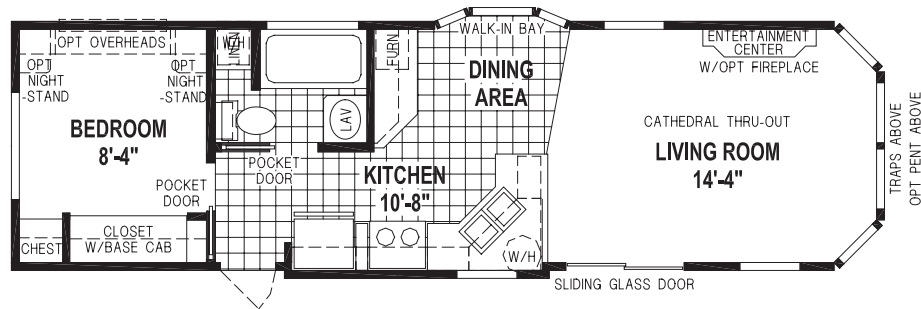
OPTION CLERESTORY



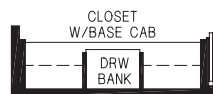
OPTION ENDWALL ENTRY



OPTION WATERFALL ENDWALL



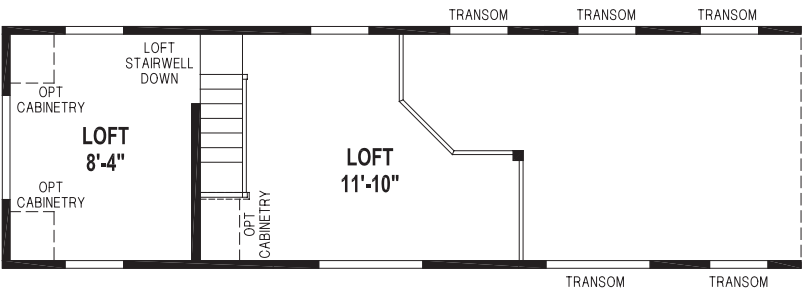
1934CTA/36'-10"12 1BEDROOM - CATHEDRAL THRU-OUT



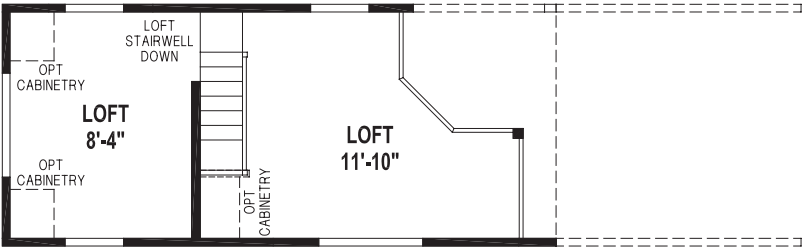
ALTERNATE WARDROBE

*** (NEW ENGLAND SERIES)**

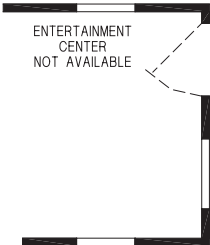
12' SERIES



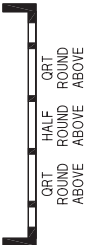
LOFT STORAGE AREA/OPTION CLERESTORY



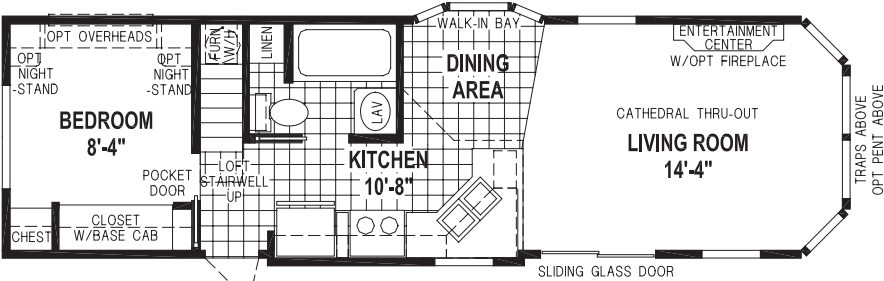
LOFT STORAGE AREA



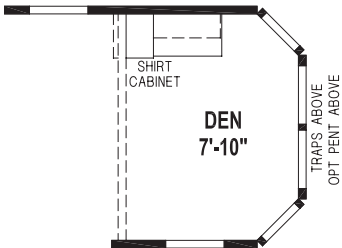
OPTION ENDWALL ENTRY



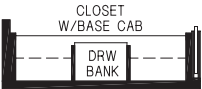
OPTION WATERFALL ENDWALL



1934CTP/36'-10"12 1BEDROOM - CATHEDRAL THRU-OUT
* 1934CTM/36'-10"12

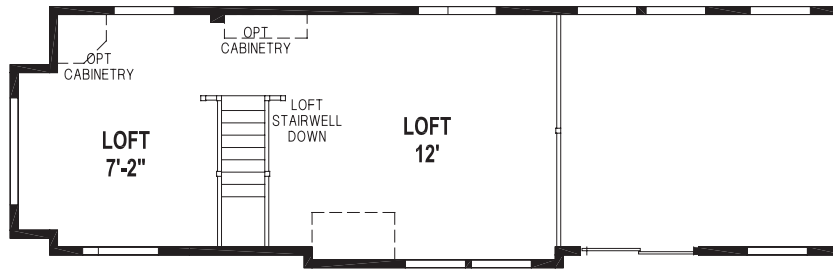


OPTION DEN

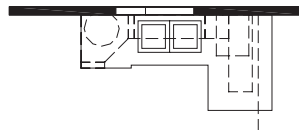


ALTERNATE WARDROBE

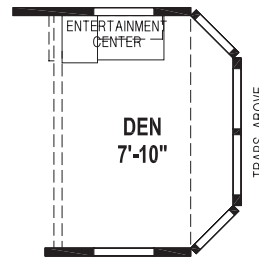
*(NEW ENGLAND SERIES)



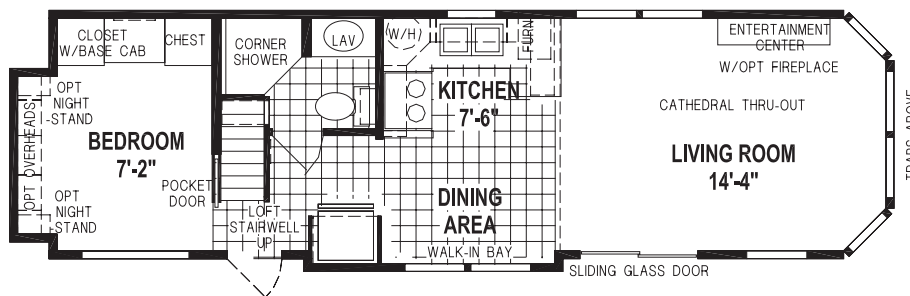
LOFT STORAGE AREA



OPTION SNACK BAR OVERHANG



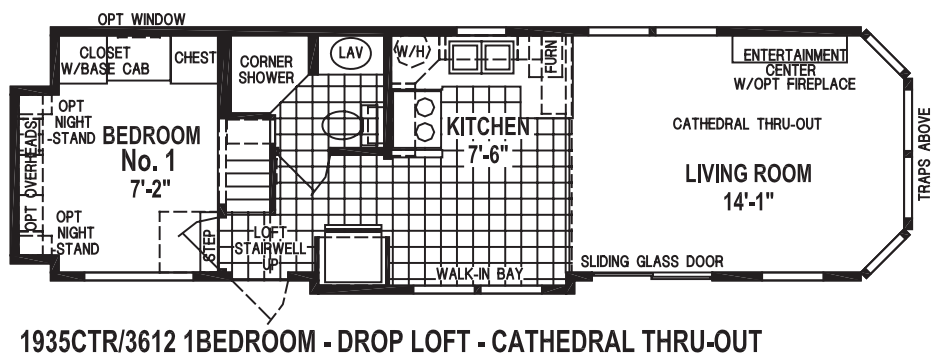
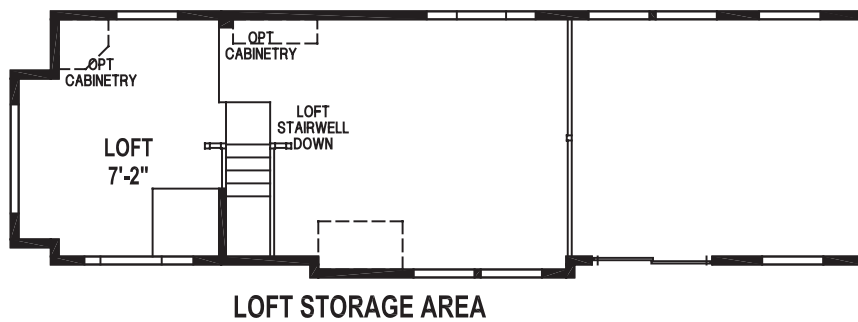
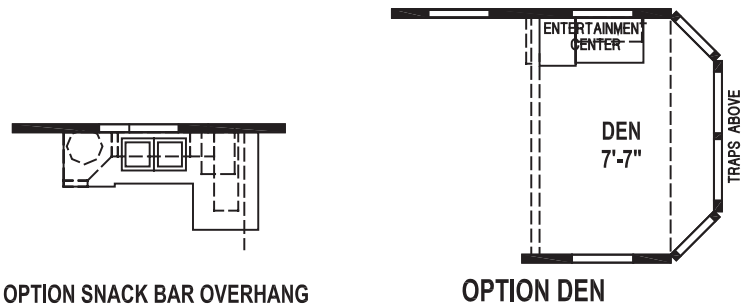
OPTION DEN

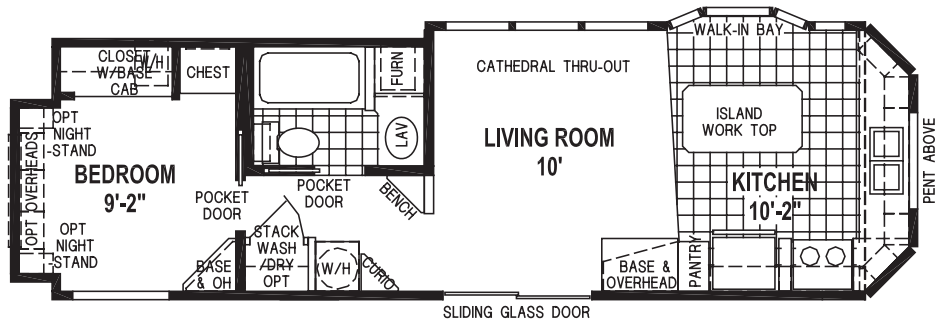
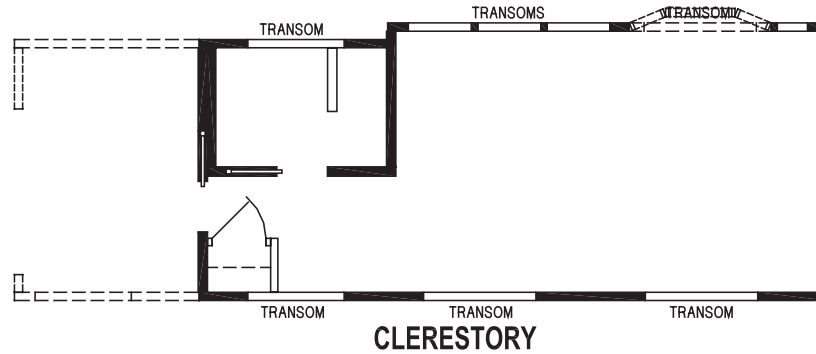


1935CTP/3612 1BEDROOM - CATHEDRAL THRU-OUT



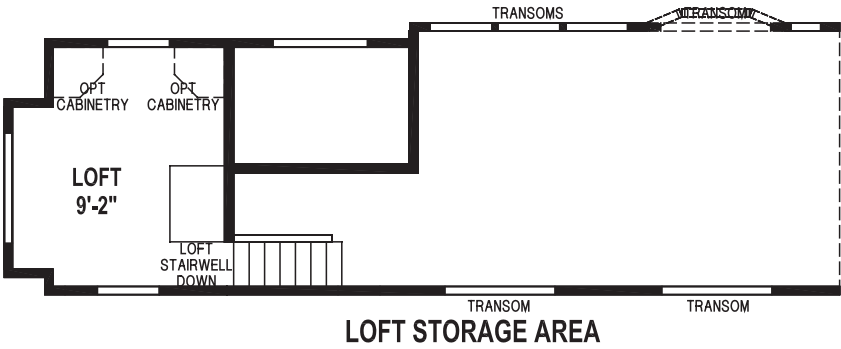
All Skyline park models are covered by our no-nonsense 15-month warranty, the very best in the industry. It's our way of showing our customers how much we believe in the quality we build into every Skyline park model. Our warranty gives new park model owners the assurance that comes from working with a company with more than six decades of building.



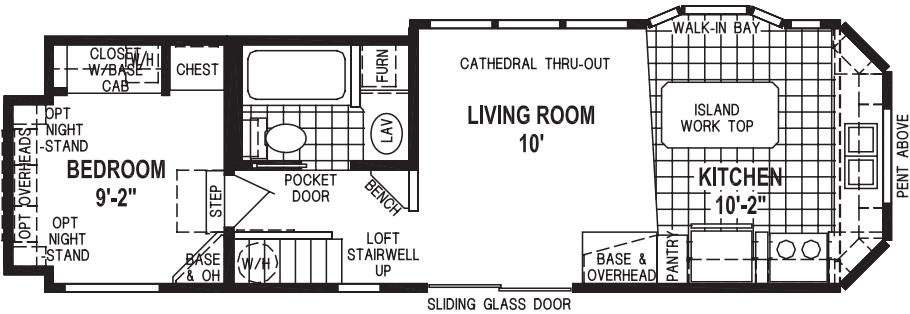


1941CTB/34'-10"12 1BEDROOM - CATHEDRAL THRU-OUT
 * 1941CTA/34'-10"12

*(NEW ENGLAND SERIES)

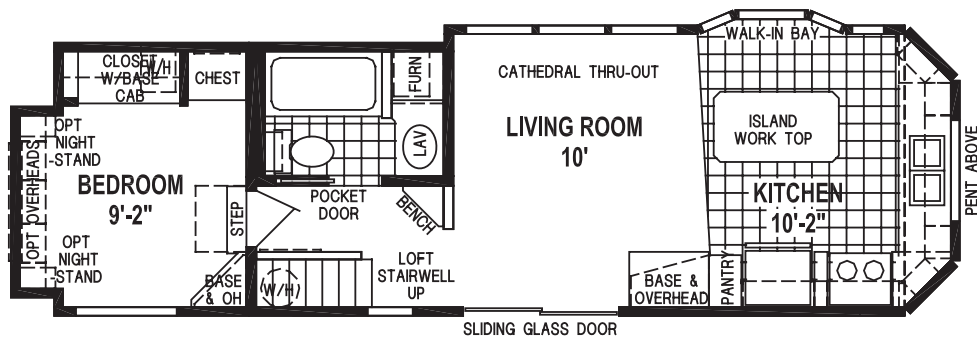
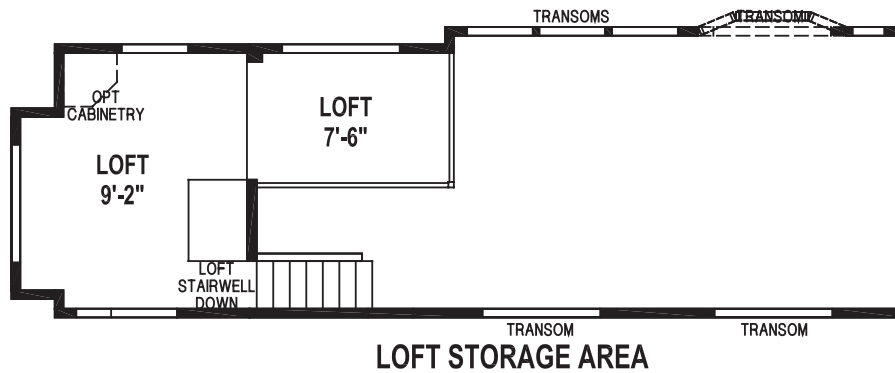


OPTION FIREPLACE



1941CTP/34'-10"12 1BEDROOM - DROP LOFT - CATHEDRAL THRU-OUT
*1941CTM/34'-10"12

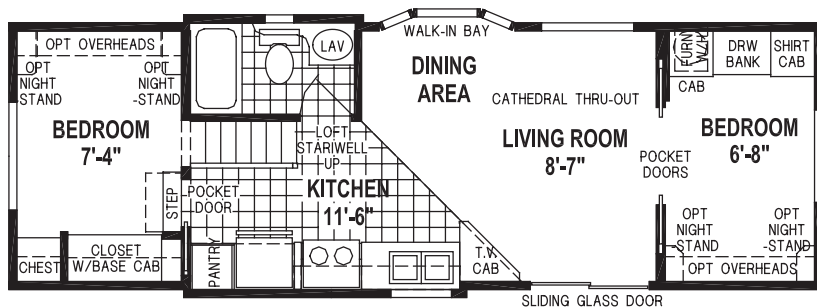
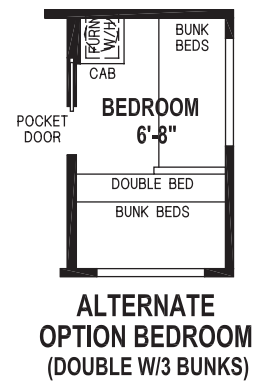
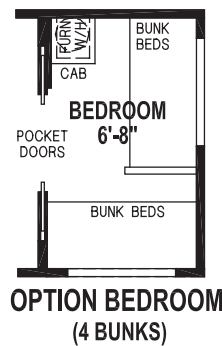
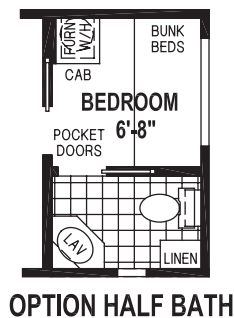
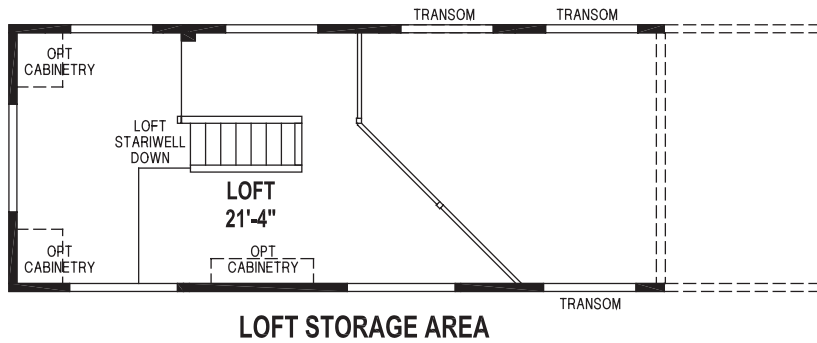
*(NEW ENGLAND SERIES)



1941CTQ/34'-10"12 1BEDROOM - DROP LOFT - CATHEDRAL THRU-OUT
* 1941CTN/34'-10"12

*(NEW ENGLAND SERIES)

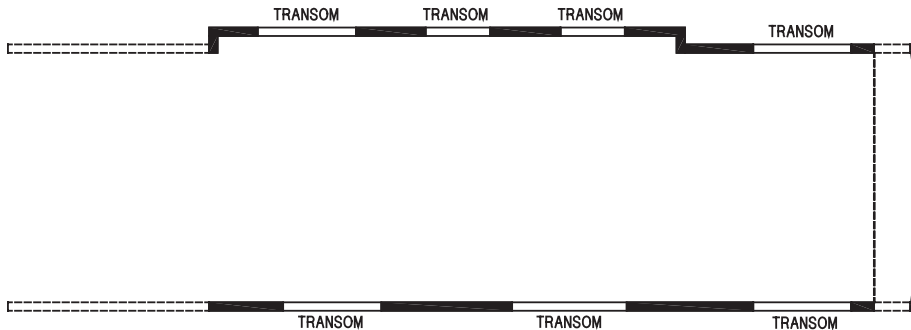




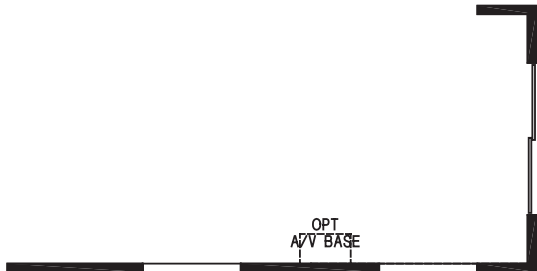
*1943CTM/34'-1"12

*(NEW ENGLAND SERIES)

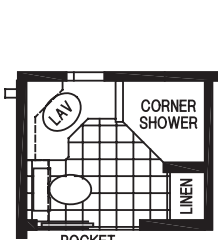
12' SERIES



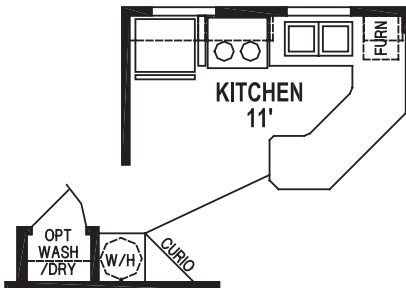
OPTION CLERESTORY



OPTION FRONT ENDWALL



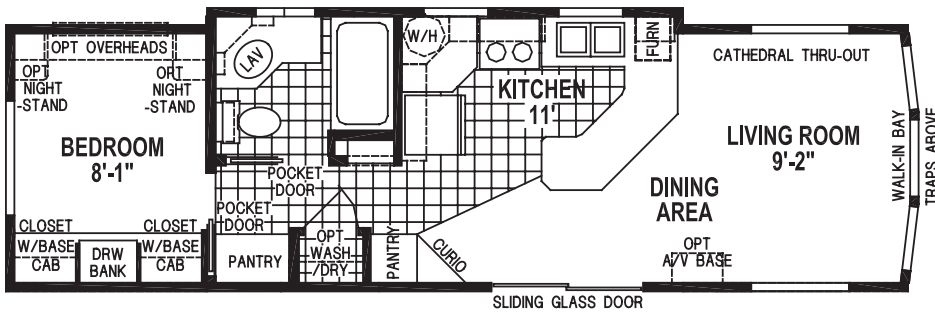
OPTION CORNER SHOWER BATH



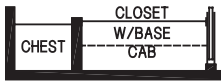
ALTERNATE KITCHEN



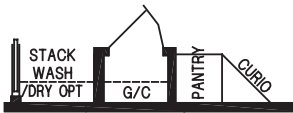
OPTION ENTERTAINMENT CENTER



1946CTB/35'-7"12 1BEDROOM - CATHEDRAL THRU-OUT
*1946CTA/35'-7"12



ALTERNATE WARDROBE

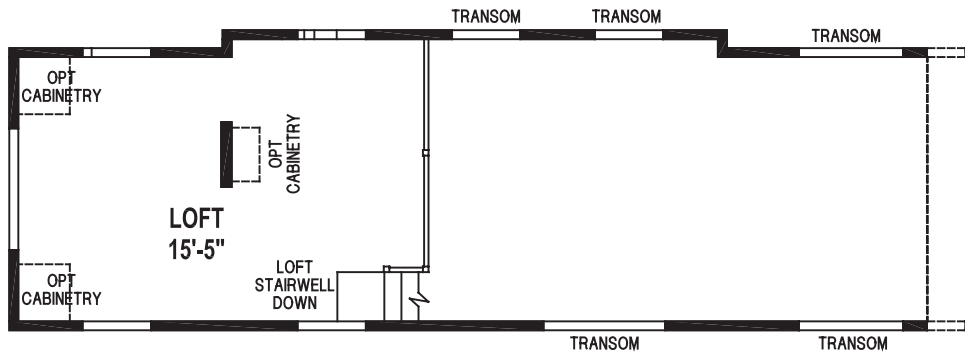


OPTION WASHER/DRYER

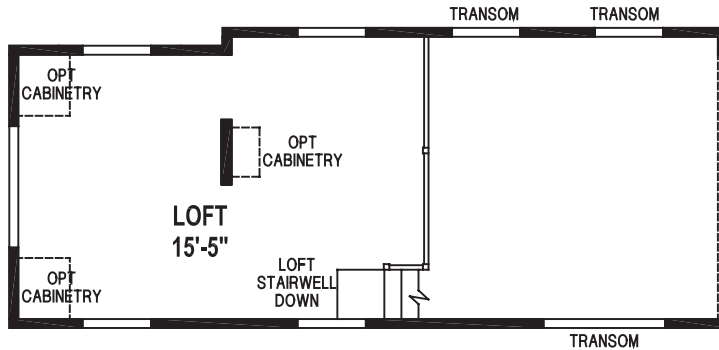


OPTION EXTERIOR DOOR

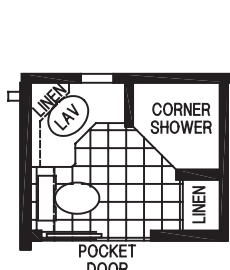
*** (NEW ENGLAND SERIES)**



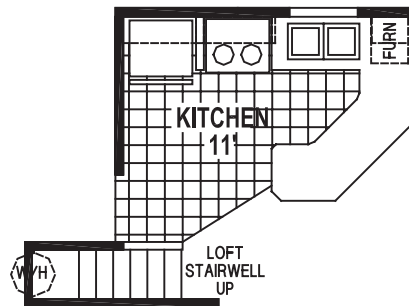
OPTION LOFT STORAGE AREA/CLERESTORY



LOFT STORAGE AREA



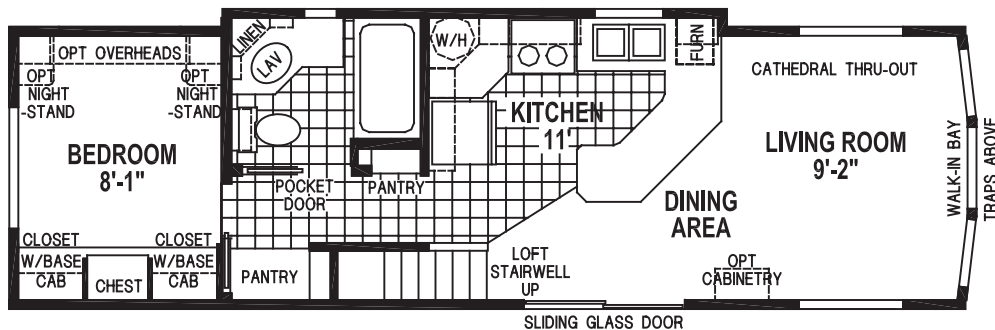
**OPTION
CORNER SHOWER BATH**



OPTION KITCHEN



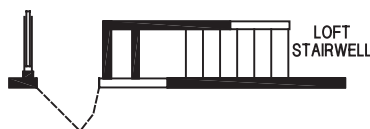
**OPTION
ENTERTAINMENT CENTER**



1946CTP/35'-7"12 1BEDROOM - CATHEDRAL THRU-OUT
* 1946CTN/35'-7"12



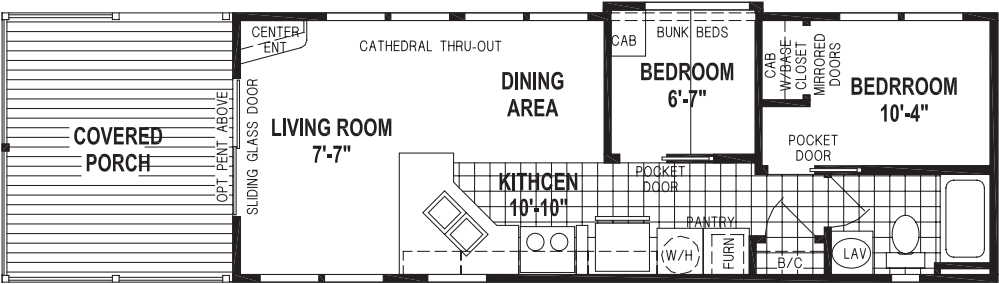
ALTERNATE WARDROBE



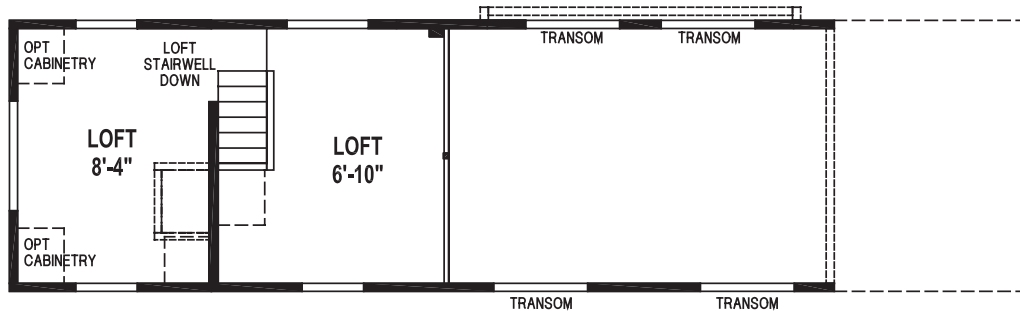
OPTION EXTERIOR DOOR
* (NEW ENGLAND SERIES)



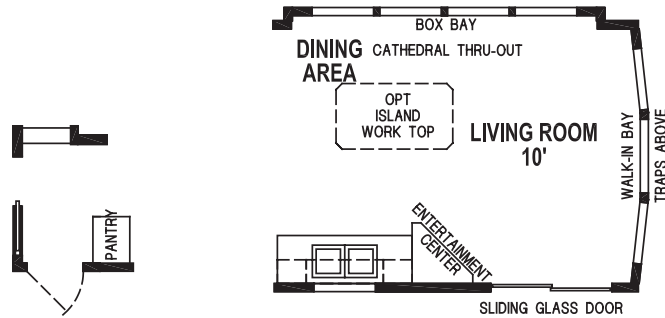
OPTION WASHER/DRYER



1949CTC/43'-212 2BEDROOM - CATHEDRAL THRU-OUT

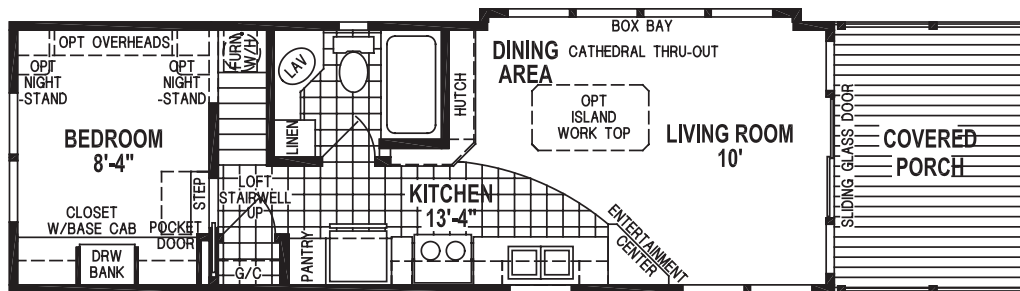


LOFT STORAGE AREA



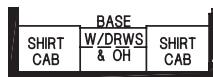
OPTION EXTERIOR DOOR

OPTION PORCH DELETE



1956CTP/4212 1BEDROOM - DROP LOFT - CATHEDRAL THRU-OUT

(NOT AVAILABLE WITH HOLDING TANKS)
*1956CTM/4212



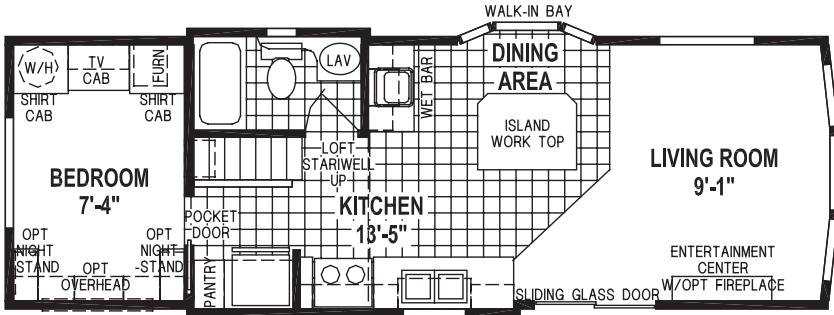
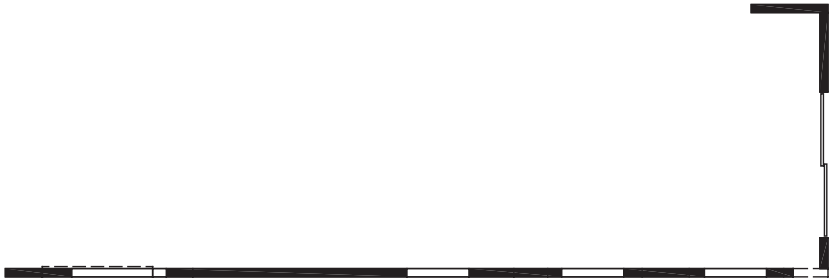
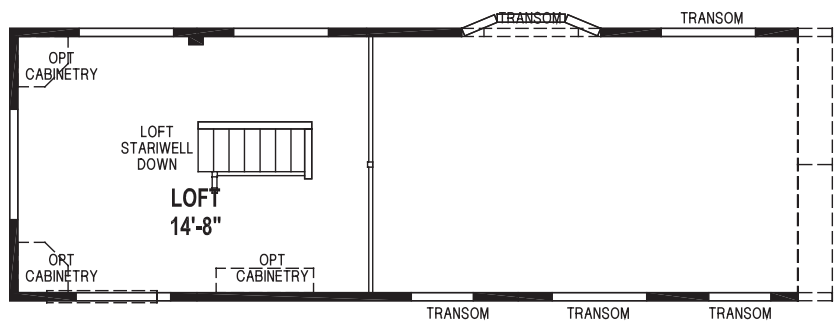
ALTERNATE SHIRT CLOSET

* (NEW ENGLAND SERIES)

12' SERIES

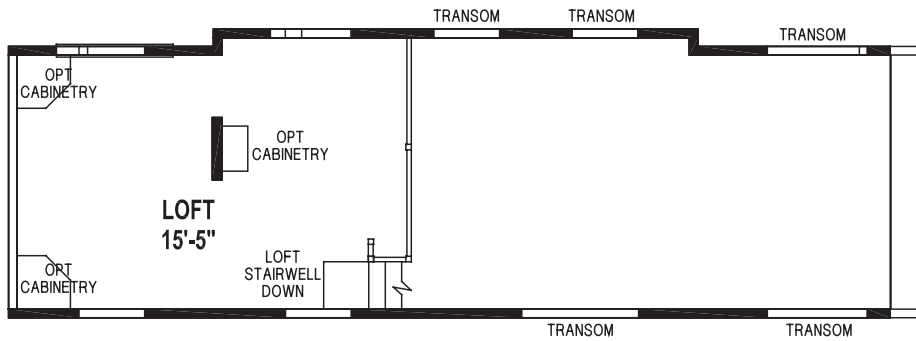




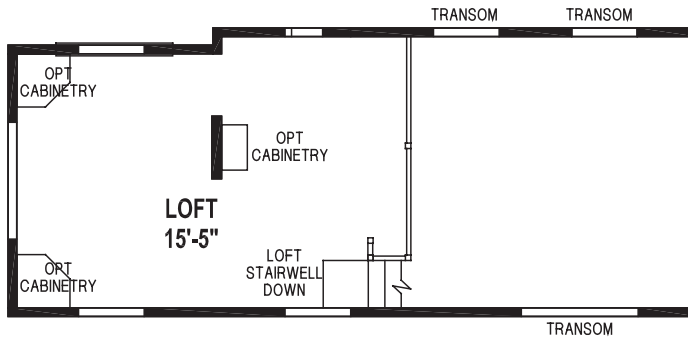


1963CTP/33'-9"12 1BEDROOM
* 1963CTM/33'-9"12

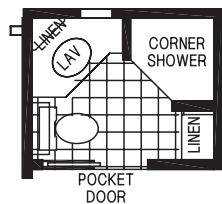
*(NEW ENGLAND SERIES)



OPTION LOFT STORAGE AREA/CLERESTORY



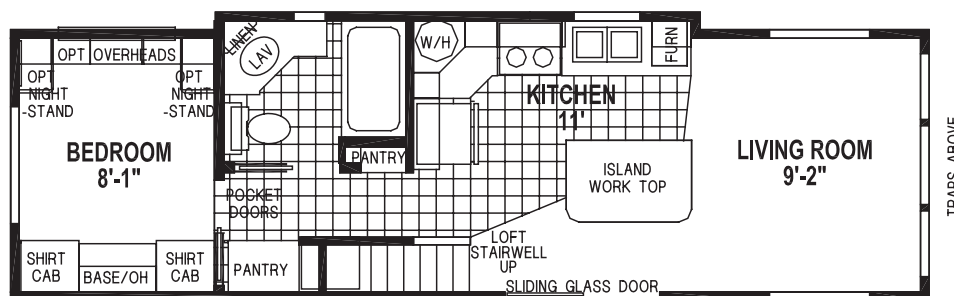
LOFT STORAGE AREA



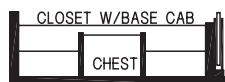
**OPTION
CORNER SHOWER BATH**



**OPTION
ENTERTAINMENT CENTER**



**1964CTP/35'-7"12 1BEDROOM
* 1964CTM/35'-7"12**



OPTION WARDROBE

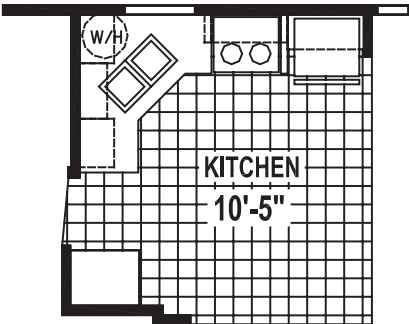


OPTION WASHER/DRYER

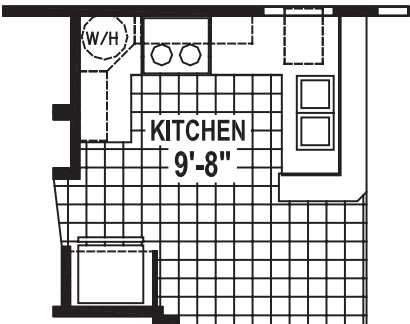


OPTION EXTERIOR DOOR

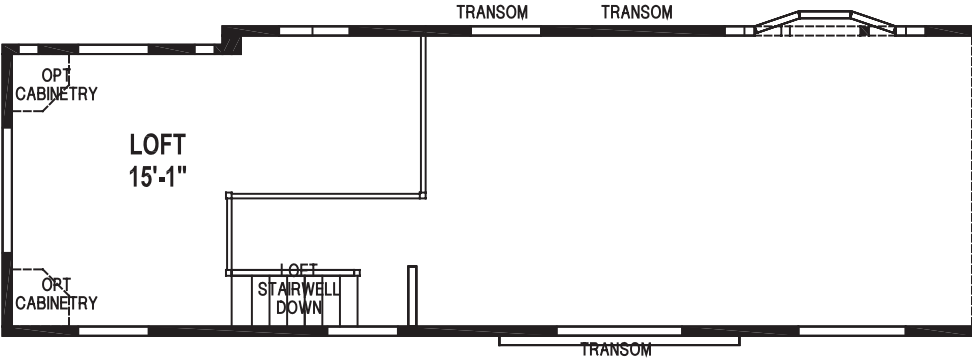
*** (NEW ENGLAND SERIES)**



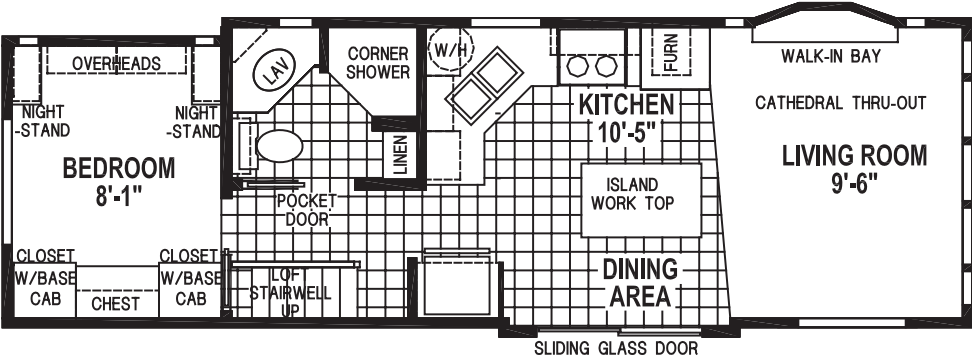
OPTION KITCHEN



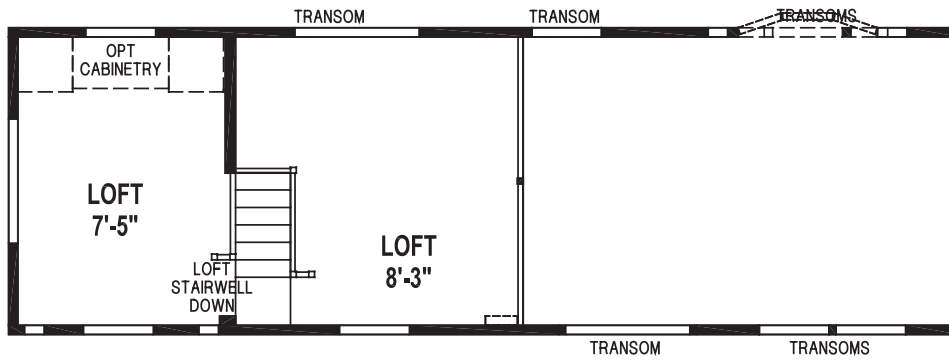
OPTION SNACK BAR KITCHEN



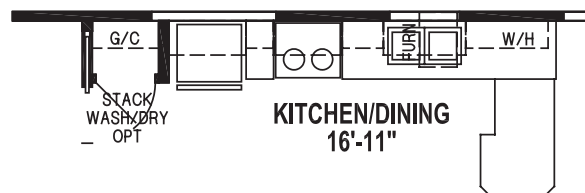
LOFT STORAGE AREA



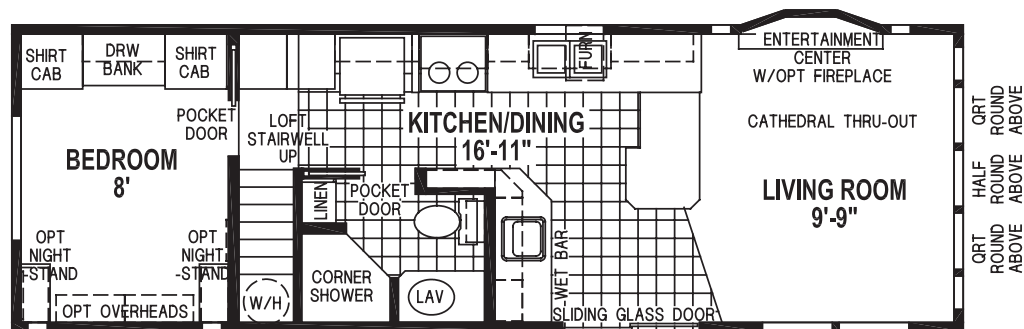
1966TP/3512 - 1BEDROOM - CATHEDRAL THRU-OUT



LOFT STORAGE AREA



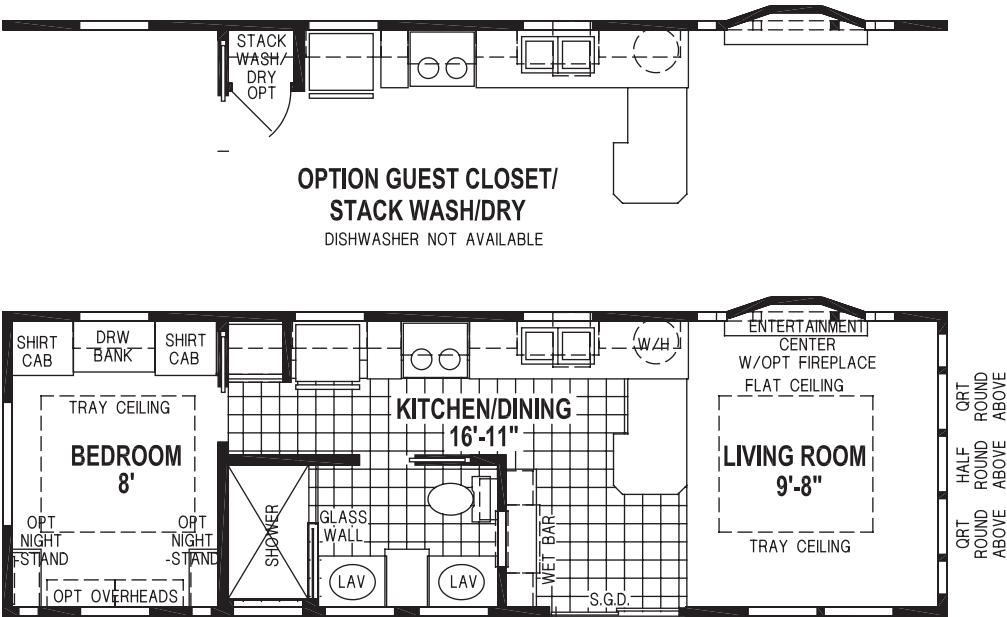
OPTION GUEST CLOSET



1967CTP/3512 1BEDROOM - DROP LOFT - CATHEDRAL THRU-OUT
*1967CTM/3512

*(NEW ENGLAND SERIES)

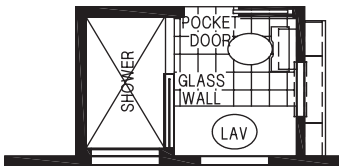
12' SERIES



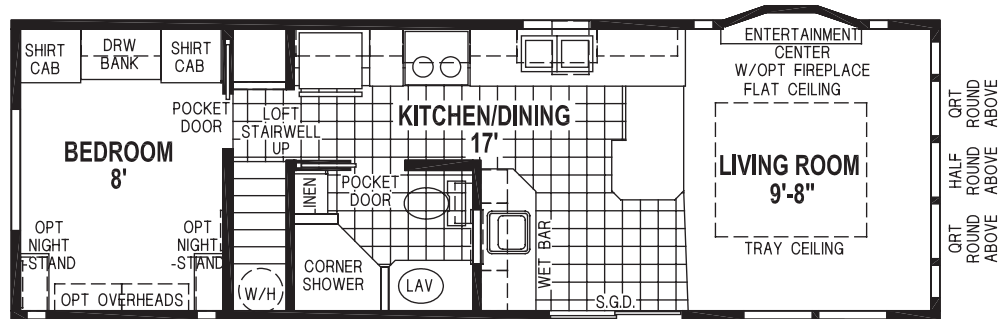
1969CTA/3512 1BEDROOM



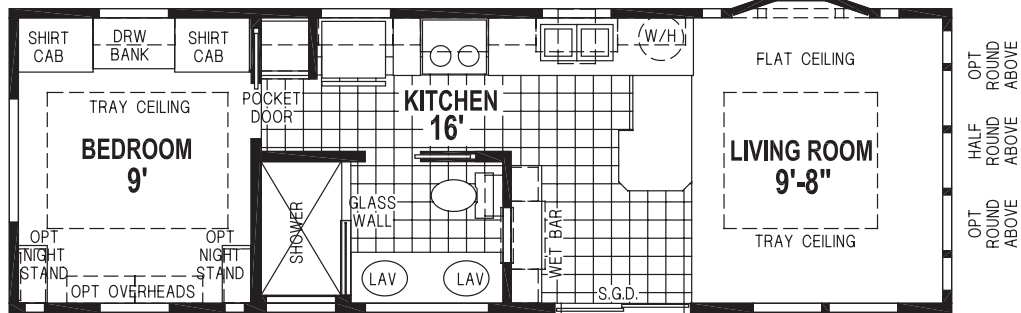
LOFT STORAGE AREA



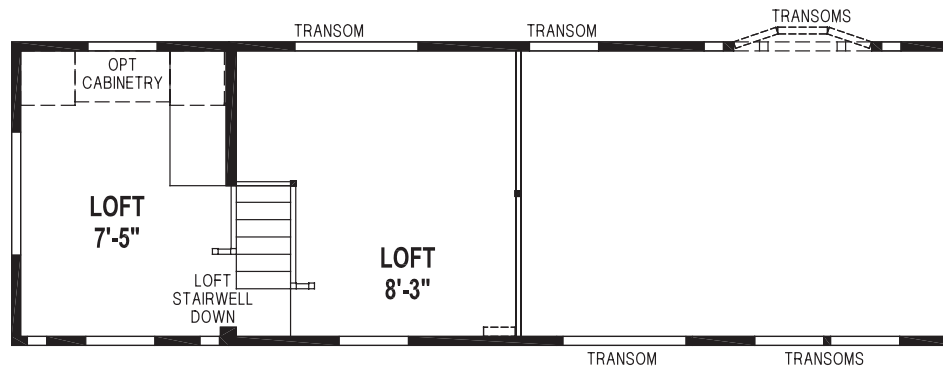
OPTION BATH



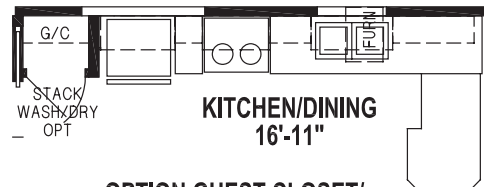
1969CTP/3512 1BEDROOM



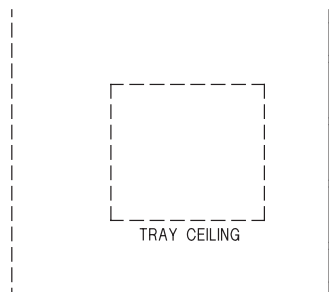
1970CTA/3512 1BEDROOM



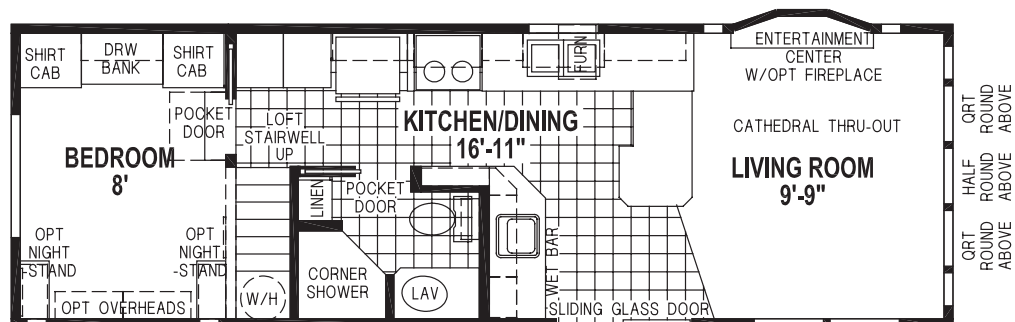
LOFT STORAGE AREA



**OPTION GUEST CLOSET/
STACK WASH & DRY**

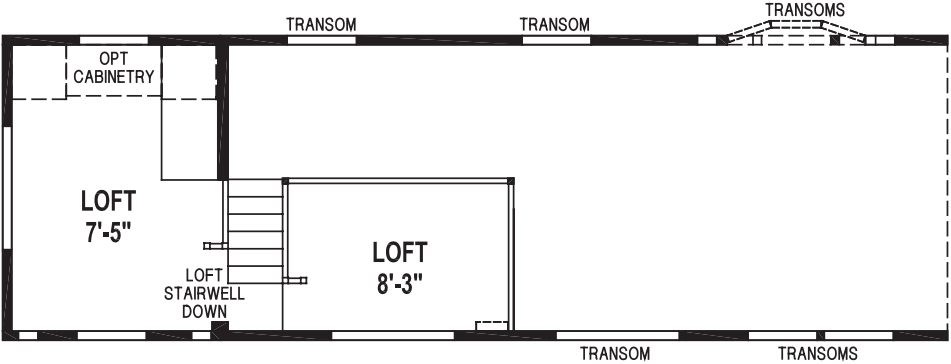


OPTION TRAY CEILING
ONLY AVAILABLE W/FLAT CEILING OPTION

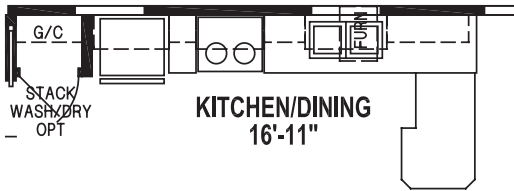


1971CTP/3512 1BEDROOM - DROP LOFT - CATHEDRAL THRU-OUT
***1971CTM/3512**

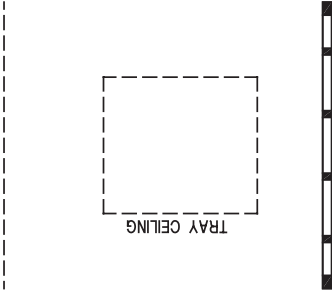
*** (NEW ENGLAND SERIES)**



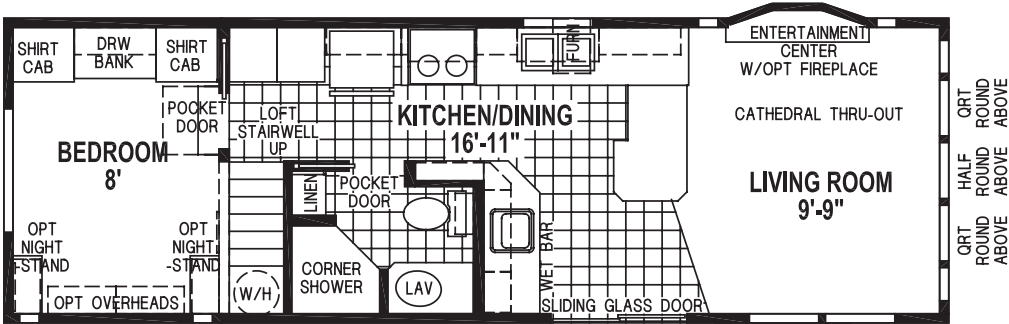
LOFT STORAGE AREA



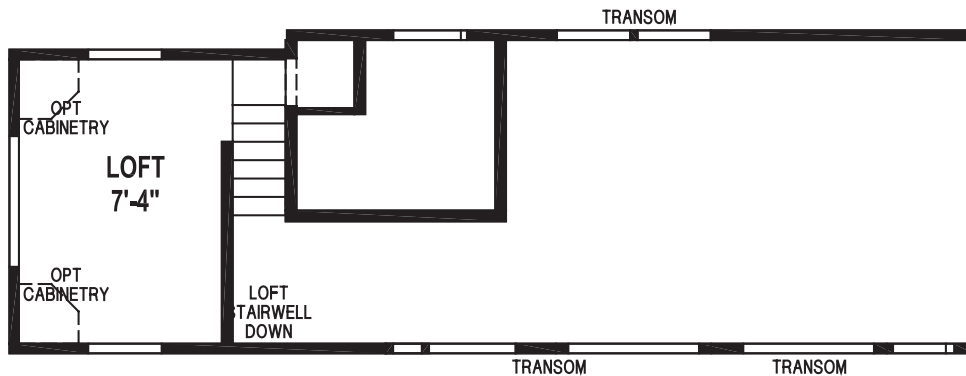
OPTION GUEST CLOSET/
STACK WASH/DRY



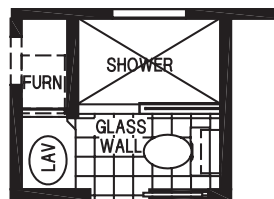
OPTION TRAY CEILING
ONLY AVAILABLE W/FLAT CEILING OPTION



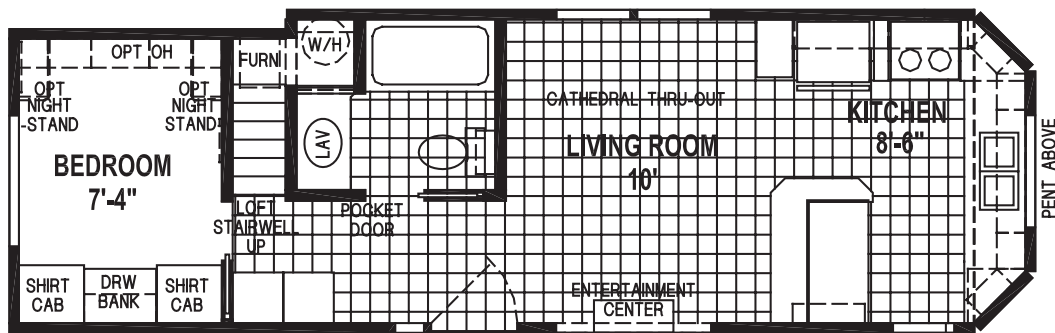
1971CTQ/3512 1BEDROOM - DROP LOFT - CATHEDRAL THRU-OUT



LOFT STORAGE AREA



OPTION SHOWER
BATH



1972CTP/35'-6"12 1BEDROOM - CATHEDRAL THRU-OUT

12' SERIES



Visit our website to learn more!
www.skylinepm.com

SHORE PARK

12' SERIES PARK MODELS

STANDARD FEATURES

LIVING AREAS

- Upgrade Carpet
- Valance with 1-½" Blinds
- Large 3-½" Cove at Ceiling
- Phone Jack (2)
- TV Jack (2)
- Chandelier Dining Light
- 52" Paddle Fan

KITCHEN

- Flat Panel Cabinetry Available in Two Styles
 - Flat Panel Hardwood Espresso Oak Doors and Face Frames
 - Maple Hardwood Doors and Face Frames
 - White and Gray Vacuum-Pressed Doors and ¾" White and Gray Face Frames
- Drawer Over Door Base Cabinet Construction
- Box Built Cabinets with Adjustable Shelves and O.H. Bottom Light Rail
- Two Shelves in Base Cabinet
- Stainless Steel Sink
- Single Lever Faucet at Sink with Sprayer
- 16 Cu. Ft. Double Door Frost-Free Refrigerator
- 30" Deluxe Gas Range with Spacesaver Microwave Range Hood
- Valance with 1-½" Blinds
- Large Cove Above Cabinets
- Cabinet Above Refrigerator
- Deluxe Cabinet and Drawer Pulls
- 6" Ceramic Tile Backsplash

BATHROOM

- Flat Panel Cabinetry Available in Three Styles
 - Flat Panel Hardwood Espresso Oak Doors and Face Frames
 - Maple Hardwood Doors and Face Frames
 - White and Gray Vacuum-Pressed Doors and ¾" White and Gray Face Frames
- 6" Ceramic Backsplash at Lav
- Fiberglass Tub with Full Surround (most models)
- Single Lever Faucet at Lav
- Privacy Locks
- Towel Bar and Paper Holder
- Power Vent Fan with Light – Fan Only at Loft Models
- Elongated China Commodes
- China Sink with Overflow and Pop-Up Drain

BEDROOM

- Upgrade Carpet
- Drapes with 1-½" Blinds
- Mirrored Wardrobe Doors with Drawers Below
- Ventilated Wire Shelving
- TV Jack

ADDITIONAL FEATURES

- ANSI 119.5 Approved
- Cathedral Ceiling or Flat Ceiling (per floor plan)
- Wire for Paddle Fan
- Shingle Roof with Ridge Cap
- 25-Year Shingles
- Vinyl Lap Siding
- Water Shut-off Valves Throughout
- Textured Ceiling
- Detachable Hitch
- Carpet Pad with Tack Strip
- Gas Furnace
- 20 Gallon Electric Water Heater
- PEX Water Lines
- Deadbolt at Rear Door
- Sliding Glass Door (Insulated)
- White Interior Passage Doors – Per Floor Plan
- Pre-Finished Door Jambs
- Single Hung Vinyl Windows
- Egress Windows in Bedrooms
- Window Grids
- Insulation: R-22 Roof, R-11 Floor and R-11 Walls
The Higher the "R-Value" the Greater the Insulation Power.
- 7'-6" Sidewall Height – Non Loft Models
- 2 x 4 Sidewall, 16" O. C.
- 2 x 6 Floor Joists, 16" O. C.
- CO₂/Smoke Detector with Battery Backup and False Alarm Control
- Exterior Receptacle with GFI Breaker
- Fiberglass Insulated Heating Runs
- Toe Kick Registers in Kitchen and Bath
- 30 lb. Roof Trusses
- Exterior Light at All Exterior Doors
- Iron Gas Piping with Shut-off Valves
- LP Detector
- Fire Extinguisher
- Soft Close Drawers
- LED Lighting Throughout

For your comfort and safety, Skyline park model designs are approved and inspected for conformance to RPTIA standards. Overall length does not include approximately four foot hitch. Room sizes are measured from floor ends and wall centers.

Because of progressive product improvement, all prices and specifications are subject to change without prior notice or obligation to Skyline Corporation.

Your Retailer, an independent contractor, who is not an agent of Skyline Corporation, is the party responsible for your purchase contract and any additions, deletions, alterations, or attachments made to or in your park model.

YOUR LOCAL SKYLINE RETAILER:

